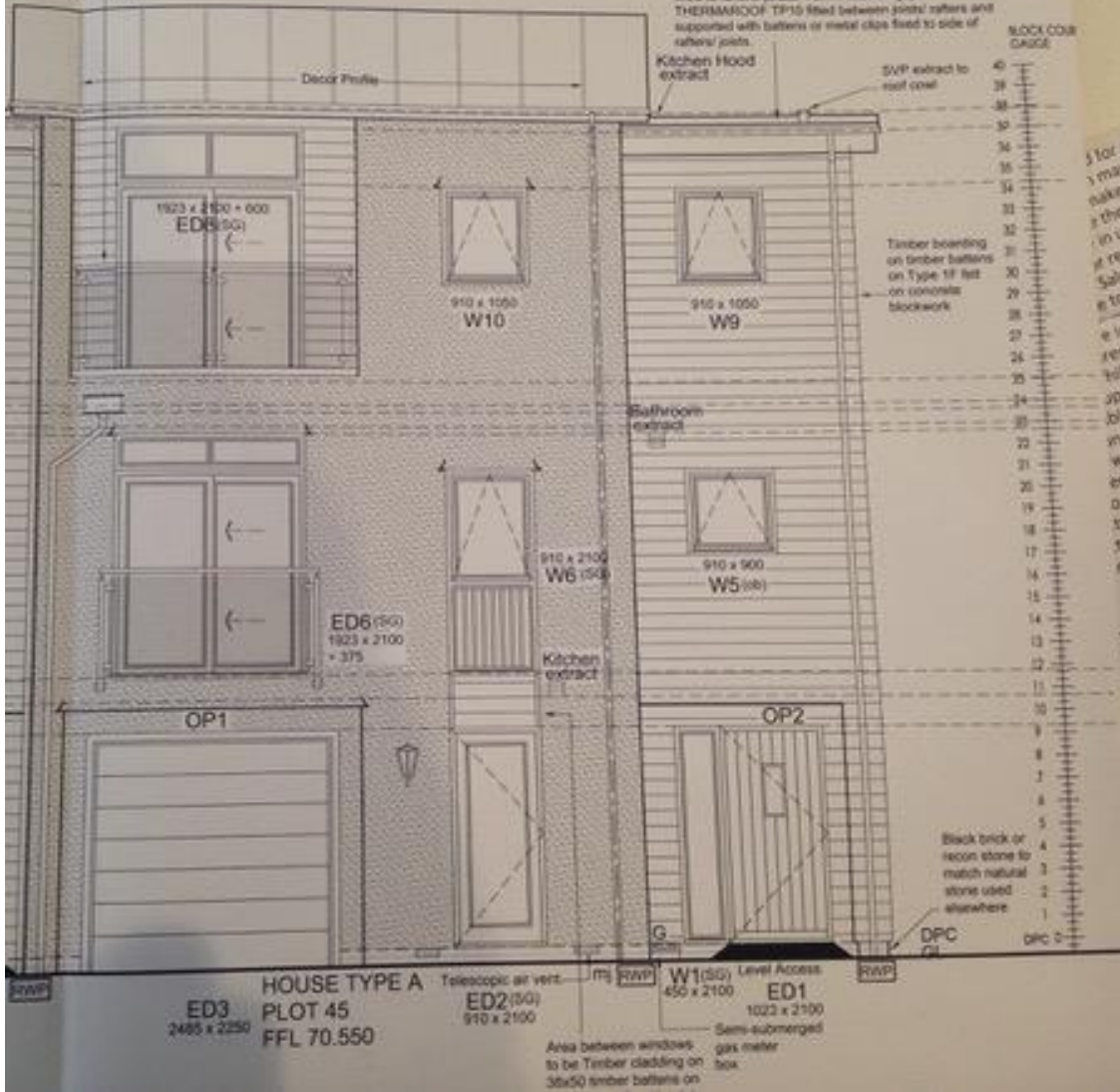


Steel frame and glass panel guarding 1100mm from parapet height to specialist design details Colour dark grey

FLAT ROOF

Single Ply membrane mechanically fixed on 90mm thick Kingspan THERMAROOF TPO/LPC PM on polythene vapour control layer on 22mm WBP plywood roof deck, fixed to rafters/joists. 75mm thick Kingspan THERMAROOF TPI10 fixed between joists/rafters and supported with battens or metal clips fixed to side of rafters/joists



For general... may alter in... make every... there may... in updating... at re-planning... Sales Adviser... e to this drawing... e included for... res shown ma... list we make... up to date the... ble delay in u... ms and/or re... with the Sale... een made so... o not consti... ty unless spe... t. They sho... eing into a

RUC

HOUSE TYPE A
PLOT 45
FFL 70.550

Area between windows to be Timber cladding on 36x50 timber battens on semi-submerged gas meter box

Background Ventilation Criteria System 1 Plots 45-46

In accordance with Table 1.4 Location of ventilation devices in rooms, Approved Document Part F, F1, Section 1, the total equivalent minimum area (mm sq) required for each room is given below:

Habitable room	min. 5000mm ²
Wet room	min. 2500mm ²

In accordance with Table 3.2a, Approved Document Part F, F1, Section 3, the total equivalent area (mm sq) required for the dwelling is given below:

Floor Area	119.98m ²
No. of bedrooms	3
Equivalent ventilator area ³	55,000mm ²

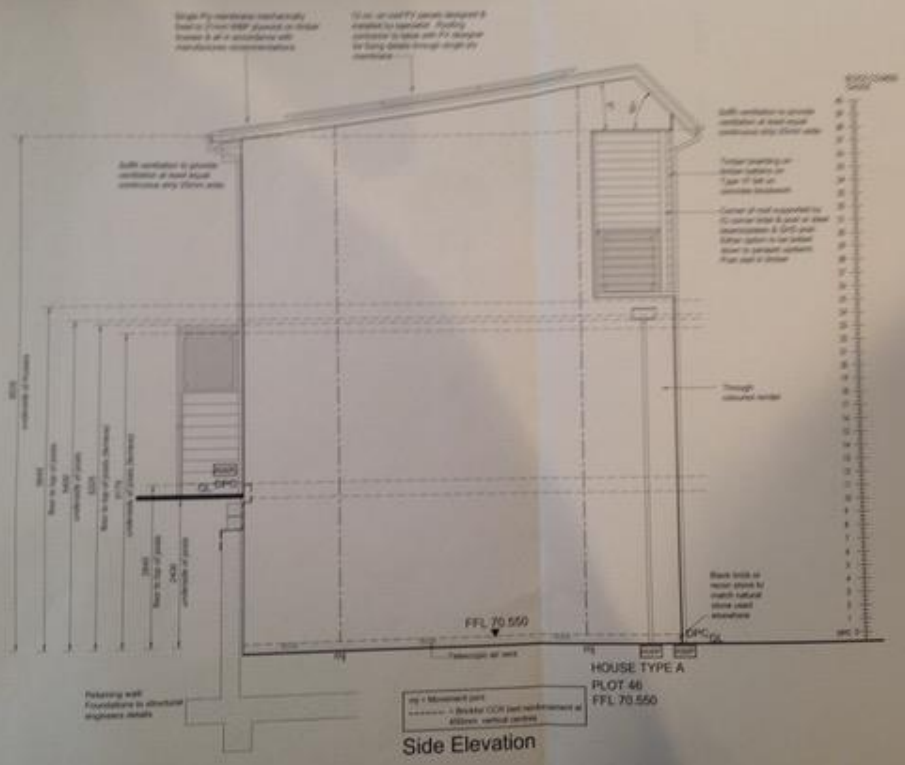
The actual total equivalent area (mm sq) is given below:

Opening Width	Size & No. of Ventilators Available per Opening	Number of Openings
450 - 650	1 x 2500	2
650 - 1250	2 x 2500	6
1250 - 1850	3 x 2500	2
1850 - 3160	4 x 2500	2
Actual equivalent ventilator area ³	70,000mm ²	

The above calculation assumes that trickle vents can be installed to the head of all sliding doors ED4, ED6, ED7 & ED8.

Extract Ventilation Rates System 1

Room	Minimum Intermittent Extract Rate
Kitchen	30l/s (adjacent to hob) or 60l/s (elsewhere)
Utility	30l/s
Bathroom	15l/s
En-suite	6l/s
WC	6l/s



Side Elevation